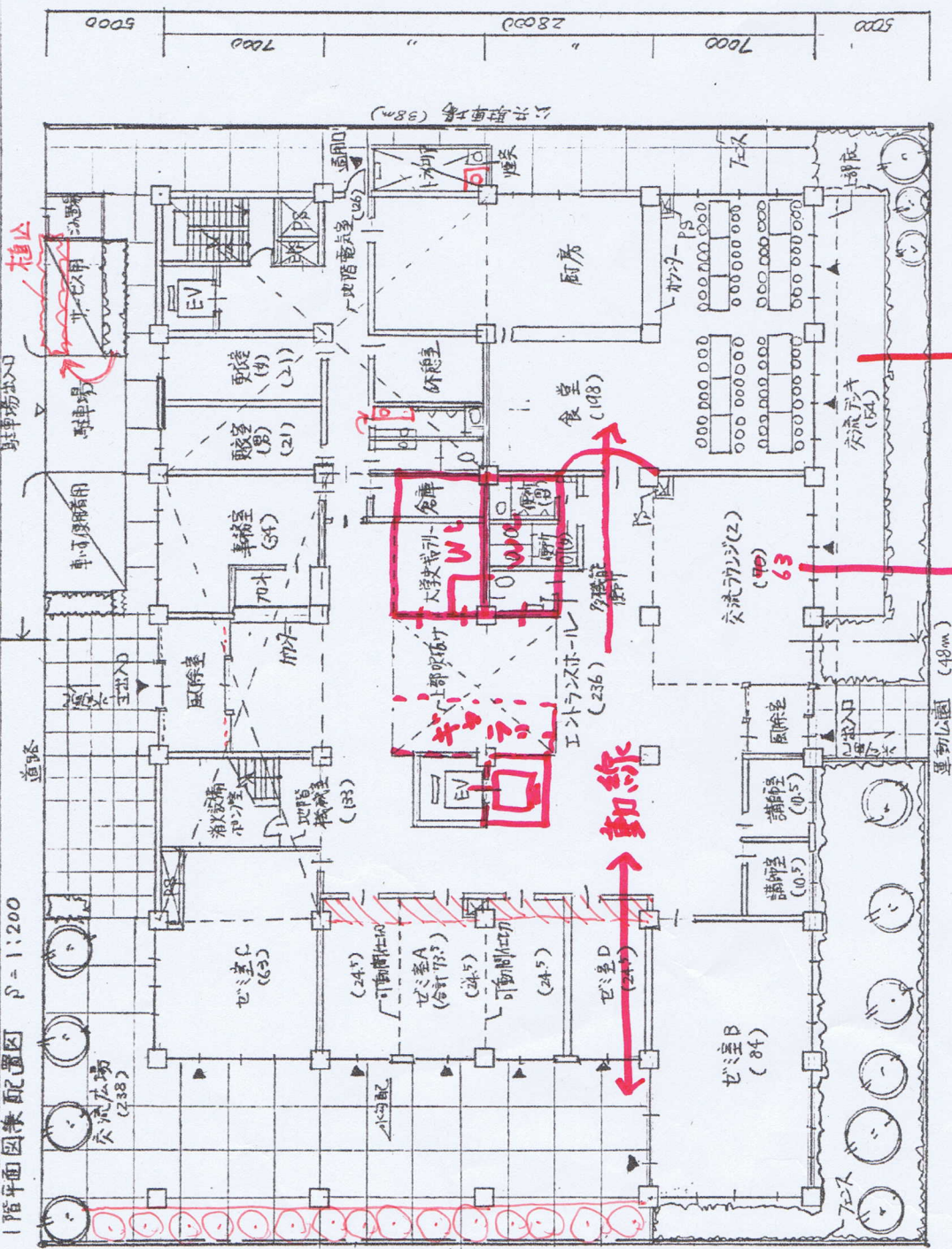
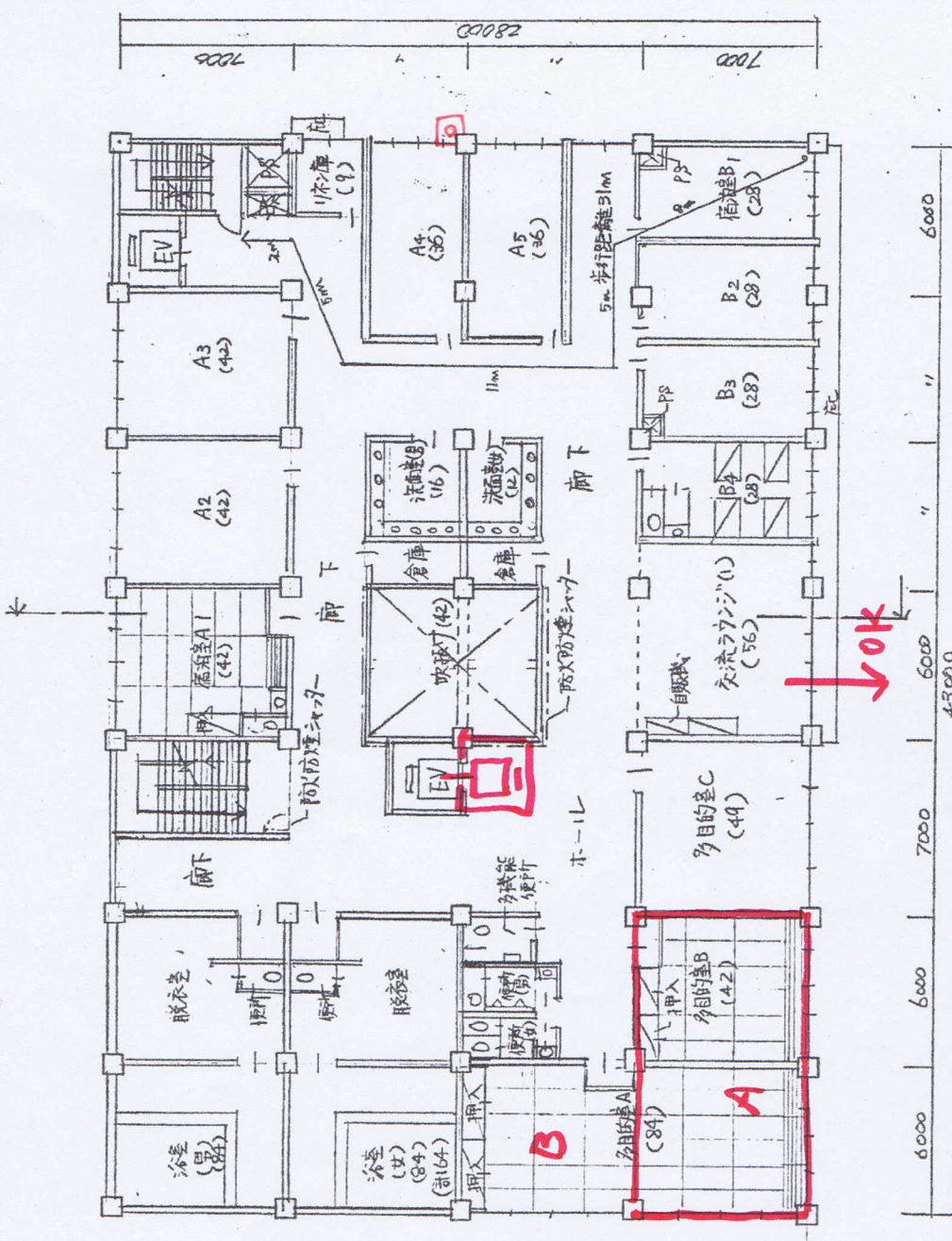


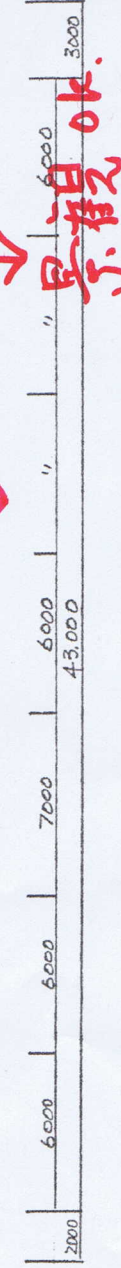
1階平面図像配置図  $\beta = 1:200$



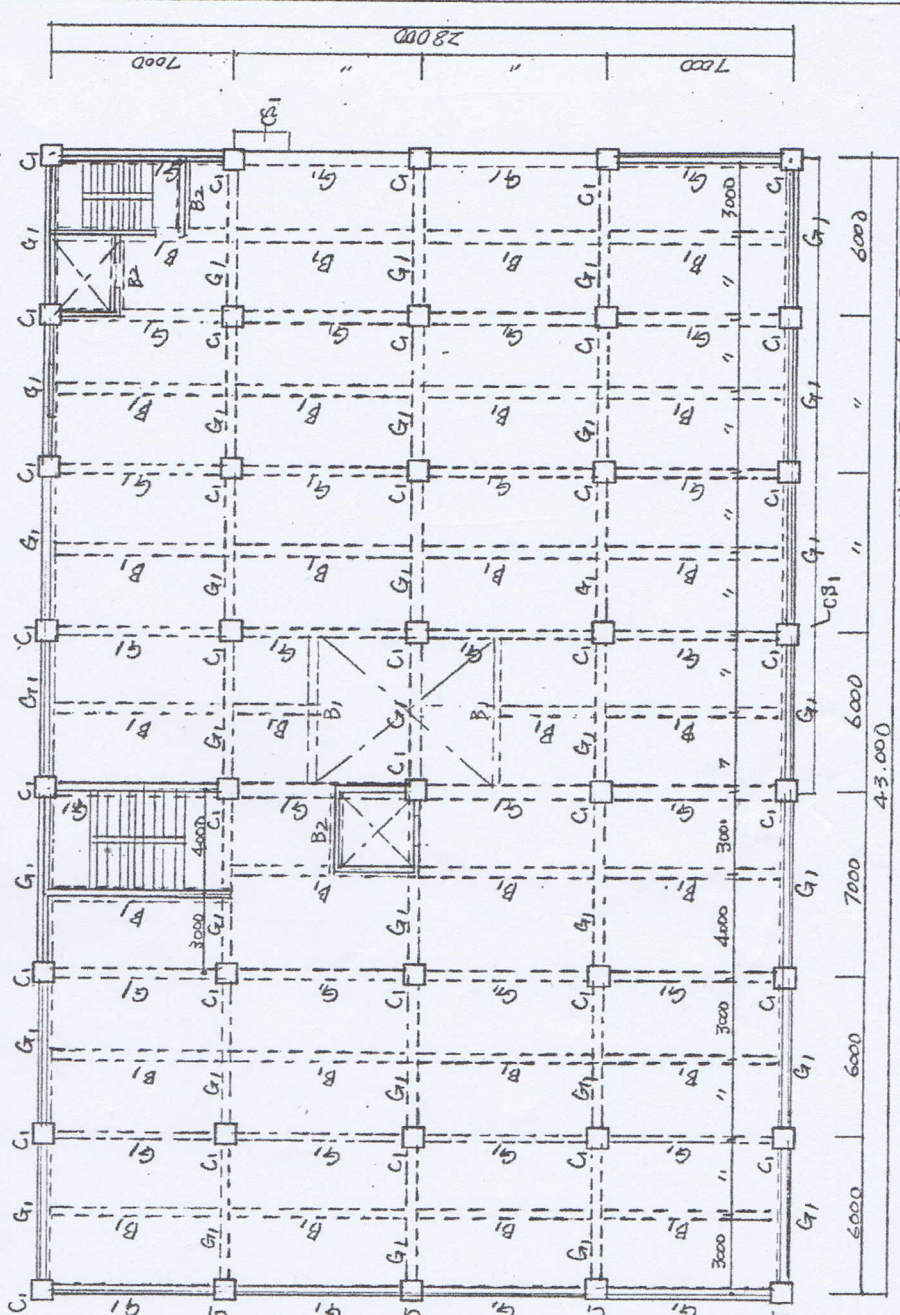
Z階平面図  $\beta = 1:200$



断面図  $\beta = 1:200$



Z階梁断面  $\beta = 1:200$  (見下階図と対比)



構造部材表

符号	部材	断面寸法 (mm)
C1	柱1	800 x 800
G1	大梁1	500 x 800
B1	小梁1	300 x 600
B2	小梁2	250 x 500
S1	天井	T=200
S2	床	T=200

面積表

1階	$43.9 \times 28.0 - 6.97 \times 1.078$	( $m^2$ )
2階	$43.9 \times 28.0 - 6.97 \times 1.162$	( $m^2$ )
合計	2.240	( $m^2$ )

